

## SESSION #15

### JOURNEYMEN: A MAN AND HIS WIFE Part 1

#### I. KEY VERSE: 1 Peter 3:7

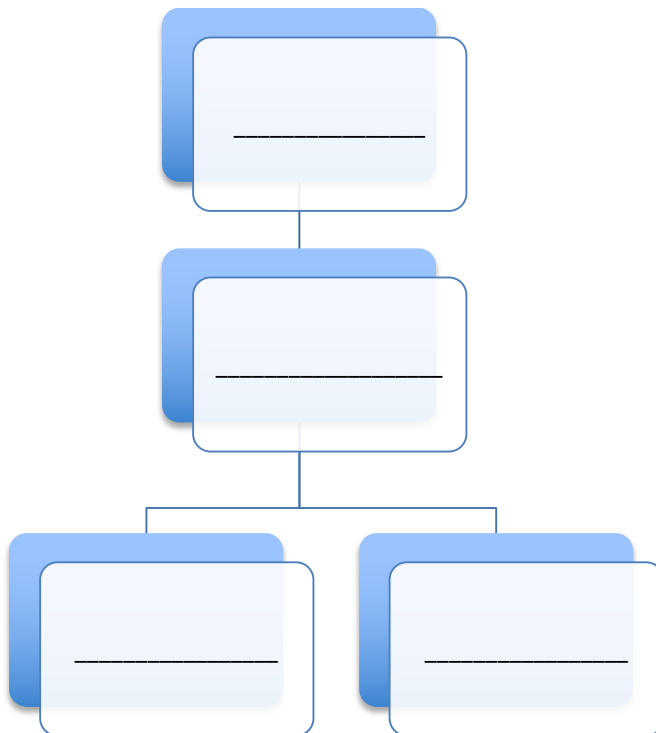
A. "... be considerate as you live with your wives." = literally

" \_\_\_\_\_ " = \_\_\_\_\_ (Bible)

B. "...treat them with respect."

#### II. TWO MODERN VIEWS OF THE MARRIAGE RELATIONSHIP

##### A. TOP DOWN TRADITIONAL



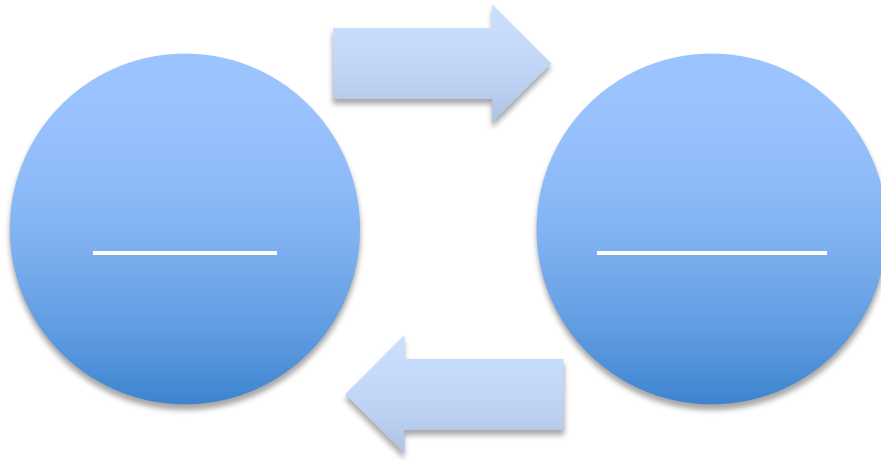
Luke 22:25-27

- Position
- Leadership Style
- Goal

##### B. 50/50 MYTHICAL

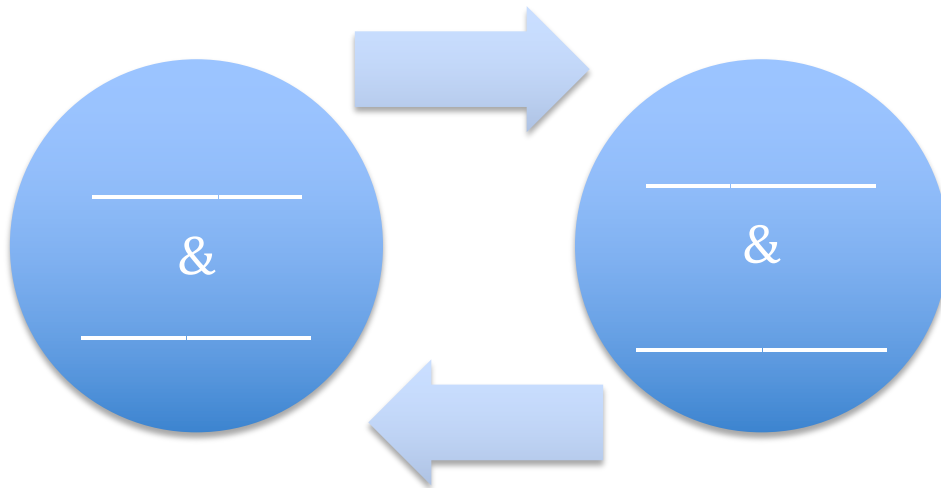
### III. A BIBLICAL VIEW OF MARRIAGE

#### A. CORE ROLES



HEAD MEANS: \_\_\_\_\_  
(Ephesians 5:23)

#### B. CORE RESPONSES



---

#### QUESTIONS FOR SMALL GROUP DISCUSSION

1. Which of the three models of marriage are you currently pursuing with your wife? Why?
2. How could you make your wife feel more valuable and “equal” this week by applying the masculine response of praise and honor? Share your application with the group and report back next week.

*\* I am greatly indebted to Robert Lewis of Fellowship Bible Church for the basic ideas and outline in this study.*